



## Hardware Quick Installation Guide Unshielded Patch Panel

This document will guide you through the basic installation process for your new D-Link Unshielded Patch Panel.



Quick Installation Guide

## About This Guide

This guide contains step-by-step instructions for setting up your D-Link Unshielded Patch Panel. Please note that the model you have purchased may appear slightly different from those shown in the illustrations.

## Product Overview

### Front Panel



Figure 1. Unshielded Patch Panel Front

### Color Coding Information

T568A		T568B	
Pin 1	White/Green	Pin 1	White/Orange
Pin 2	Green	Pin 2	Orange
Pin 3	White/Orange	Pin 3	White/Green
Pin 4	Blue	Pin 4	Blue
Pin 5	White/Blue	Pin 5	White/Blue
Pin 6	Orange	Pin 6	Green
Pin 7	White/Brown	Pin 7	White/Brown
Pin 8	Brown	Pin 8	Brown

Table 1. Wire Color Code

### Installation

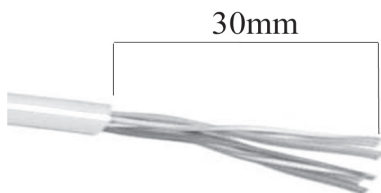


Figure 2.

A. To connect a cable to the Unshielded Patch Panel, first take the end of the cable wiring and strip approximately 30 mm off the cable jacket. (Figure 2)

B. Separate the wires into 4 pairs.

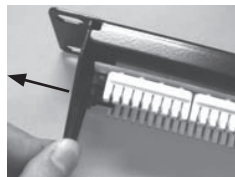


Figure 3.

C. Take off the support bar before punching wires. (Figure 3)

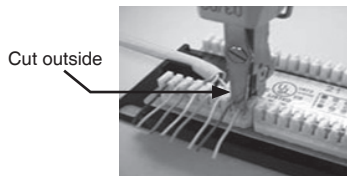


Figure 4.

D. Follow the IDC color code for T568A or T568B wiring. (Table 1)  
Use the impact tool to punch in and connect the wires to the IDC. (Figure 4)



Figure 5.

E. Lock the support bar onto the rear of the panel. (Figure 5)

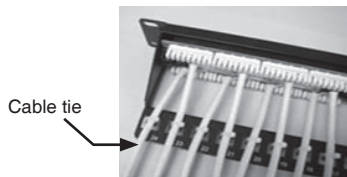


Figure 6.

F. Use a twist tie to secure the cable tightly onto the support bar. Repeat this process for each cable you wish to connect. (Figure 6)